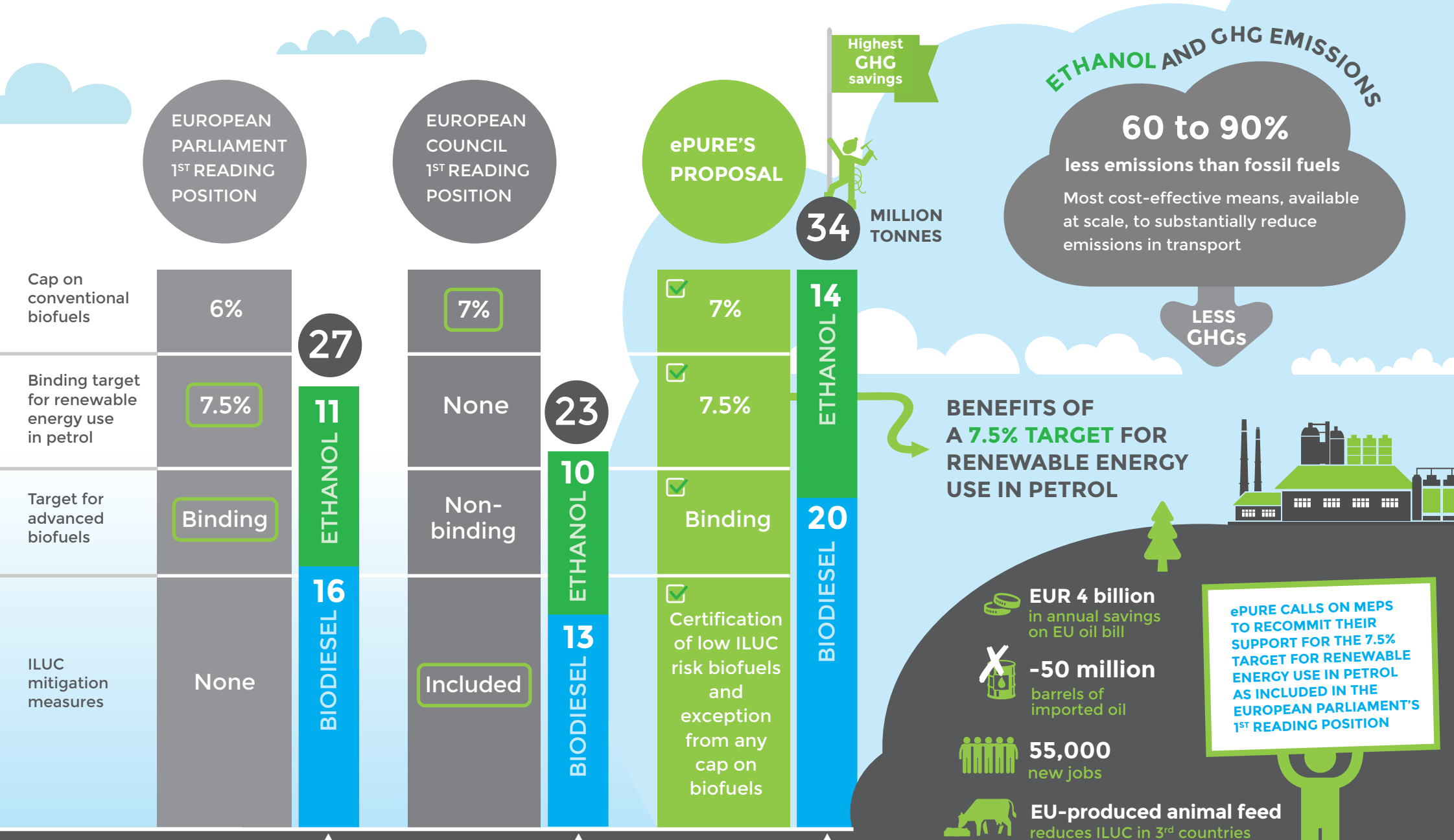


ETHANOL IS THE BEST CHOICE TO ACHIEVE HIGHER GHG SAVINGS



*Based on average ethanol savings of 60% GHG emissions

TOTAL ANNUAL GHG SAVINGS (ILUC EMISSIONS TAKEN INTO ACCOUNT) IN MILLION TONNES*

ePURE CALLS ON MEPS TO RECOMMIT THEIR SUPPORT FOR THE 7.5% TARGET FOR RENEWABLE ENERGY USE IN PETROL AS INCLUDED IN THE EUROPEAN PARLIAMENT'S 1ST READING POSITION