

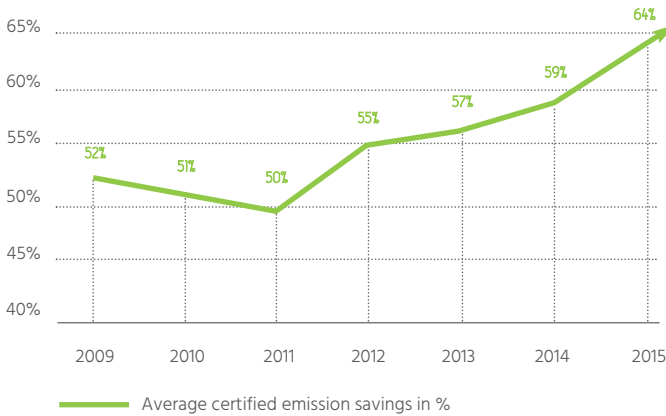
ePURE members produced **5.8 billion litres** of ethanol, **78%** of which was for **fuel use**, with an average of **64% GHG savings** compared to petrol



and co-producing **5.9 million tonnes** of co-products, of which **4.9 million tonnes** was high-protein, GMO free animal feed



Certified average greenhouse gas emission savings of renewable European ethanol compared to petrol*

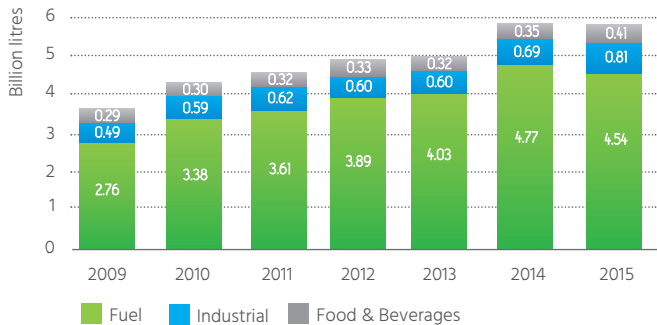


Source: Aggregated and audited data of ePURE members

Since 2011 the average certified greenhouse gas emission savings of renewable ethanol compared to fossil fuel have increased continuously, reaching 64% in 2015.

*Compared to a fossil fuel comparator of 83.8 gCO₂eq / MJ

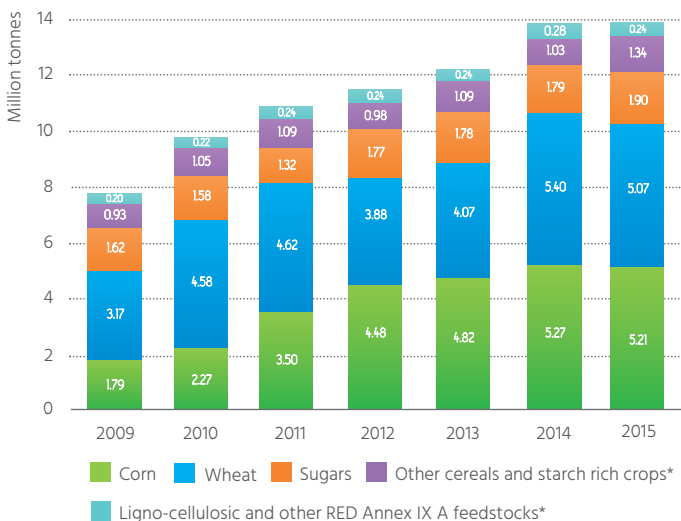
Renewable ethanol production by end-use



Source: Aggregated and audited data of ePURE members

Most of the growth in European renewable ethanol production has taken place in the fuel market, with traditional markets, such as beverages and industrial applications, remaining fairly stable.

Feedstock used to produce renewable ethanol



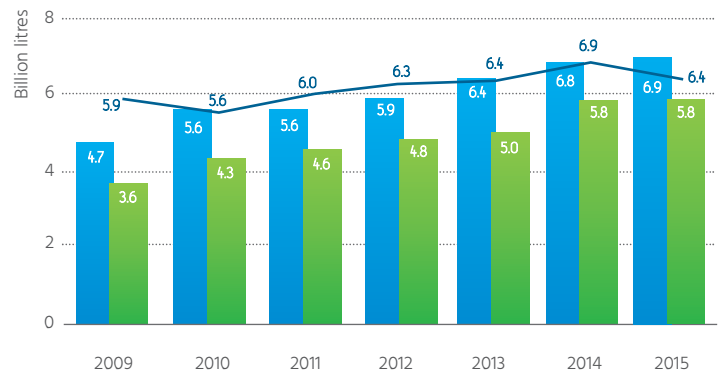
Source: Aggregated and audited data of ePURE members
*Starch rich crops and RED Annex IX A feedstock use are estimates for 2011, 2012, 2013, 2015

Nearly all (99.7%) of the feedstock used to produce renewable ethanol by ePURE members was grown in Europe.



99.7% of the crops used were grown by **European farmers**

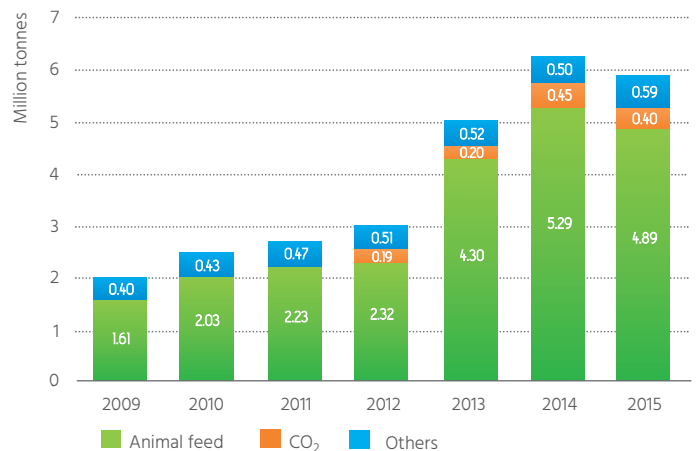
European renewable ethanol production



Source: * Aggregated and audited data of ePURE members
** EU Ethyl Alcohol Balance, European Commission

In 2015, ePURE members produced 5.8 billion litres of renewable ethanol, operating at 84% of their installed production capacities.

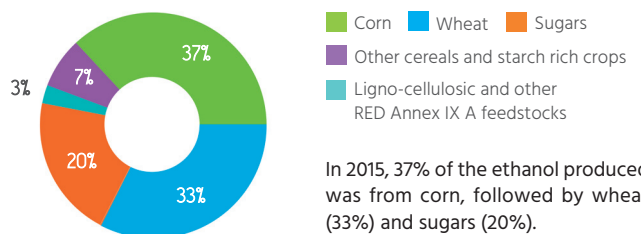
Co-products of European renewable ethanol production



Source: Aggregated and audited data of ePURE members

Animal feed makes up the largest share of renewable ethanol co-products produced by ePURE members. Of the 5.88 million tonnes of co-products produced in 2015, 4.89 million tonnes were animal feed.

Share of European renewable ethanol produced from each feedstock type



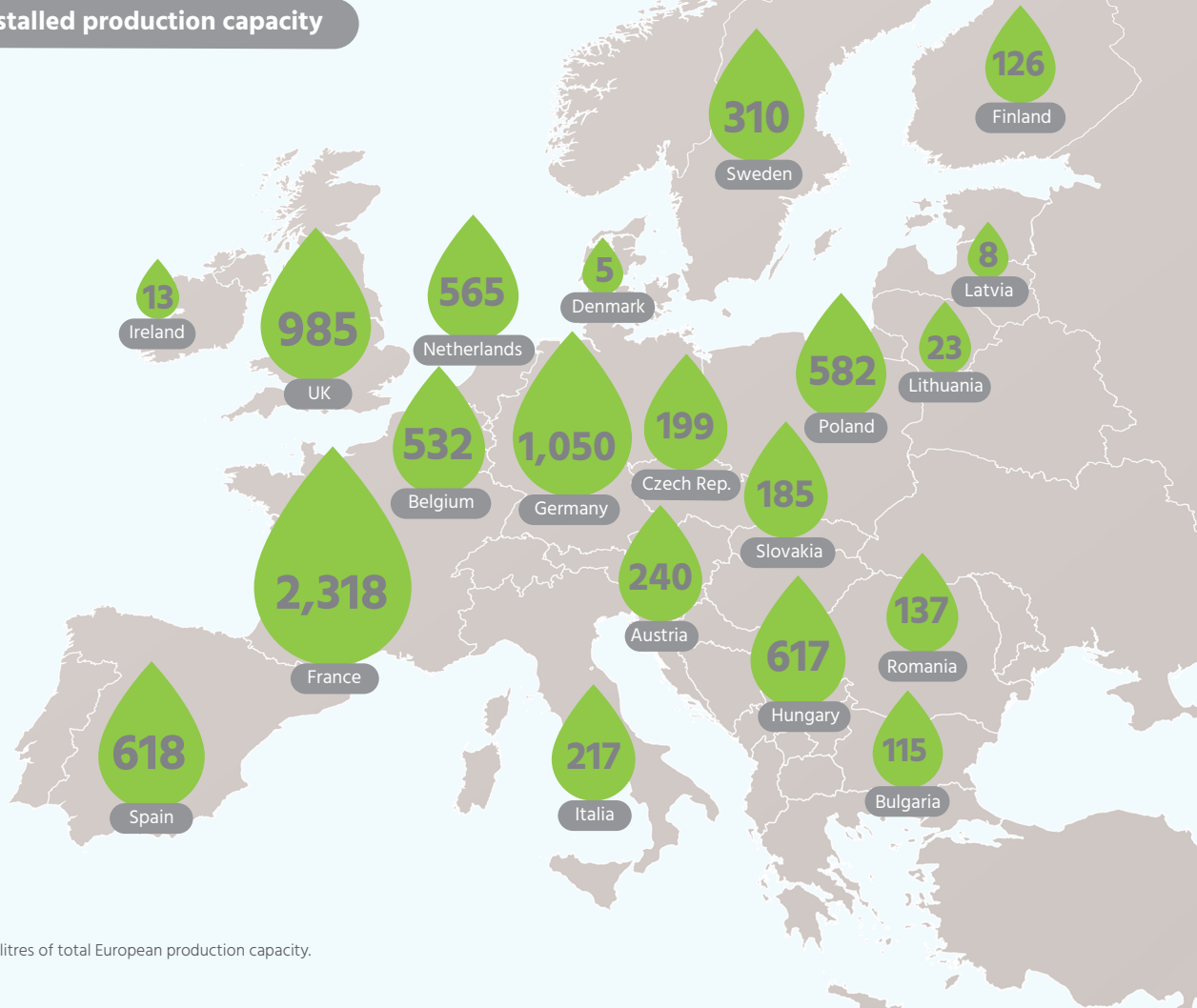
Source: Aggregated and audited data of ePURE members

In 2015, 37% of the ethanol produced was from corn, followed by wheat (33%) and sugars (20%).

European ethanol installed production capacity

(million litres)

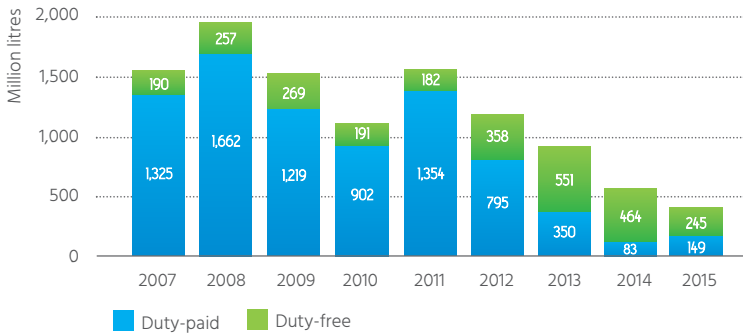
TOTAL
8,899



Source: ePURE

*Includes non-ePURE members also.
ePURE members account for 6.9 billion litres of total European production capacity.

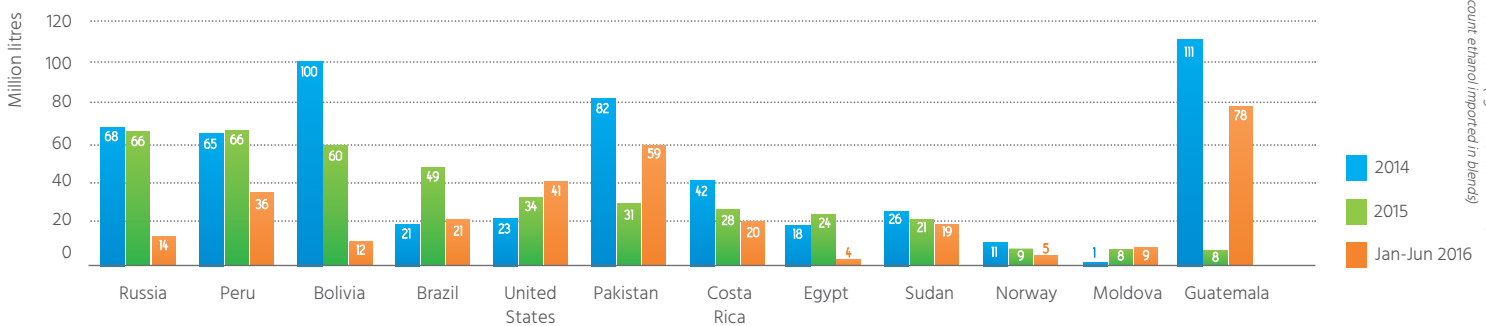
Imports of ethanol into the EU



Source: Eurostat, STEEX, USITC

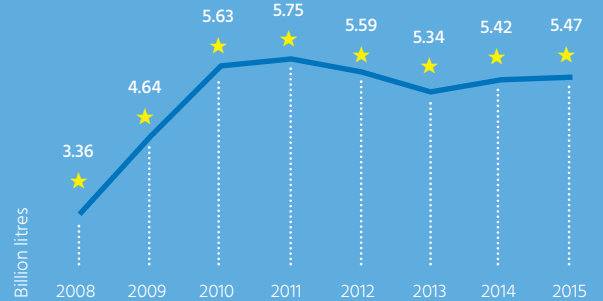
EU ethanol imports in 2015 declined slightly compared to 2014, reaching 394 million litres. While the share of duty-paid imports increased compared to the previous year, the majority of imports were still duty-free.

Main countries of origin in ethanol imports into the EU



Source: Eurostat (figures do not take into account ethanol imported in blends)

EU fuel ethanol consumption



Source: EROBSERVER

In 2015, there was an overall decline in imports of duty-free origin into the EU compared to 2014. Ethanol exports from Pakistan and Guatemala dropped sharply before regaining again in 2016.