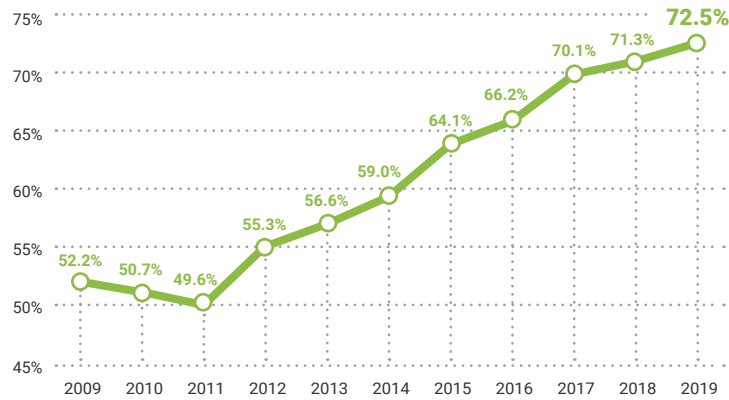


In 2019, ePURE members produced **5.6 billion litres of ethanol** and **5.33 million tonnes of co-products**, of which 3.83 million tonnes was high-protein, GMO-free animal feed. **99% of the crops used were grown by European farmers**. 82.3% of the ethanol produced was for fuel use, with an average of **over 72.5% GHG savings compared to petrol**.

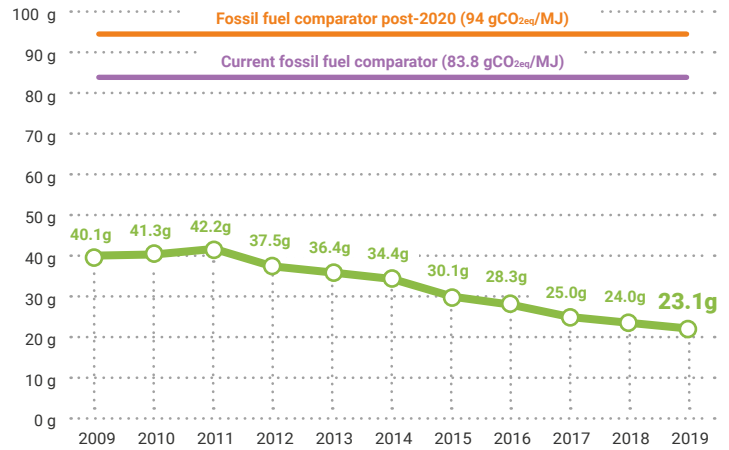
Average certified emission savings in %

Since 2011 the average certified greenhouse gas emission savings of renewable ethanol against fossil fuel have increased continuously, reaching 72.5% in 2019.



Source: Aggregated and audited data of ePURE members, compared to a fossil fuel comparator of 83.8 gCO_{2eq}/MJ

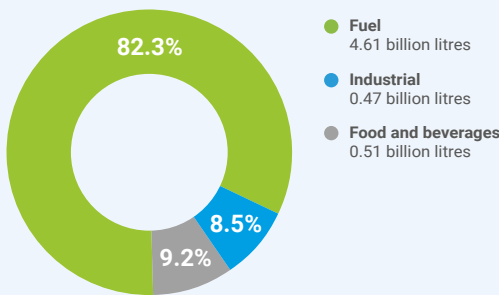
Average certified emissions from the production and use of fuel ethanol in gCO_{2eq}/MJ



Source: Aggregated and audited data of ePURE members

Renewable ethanol production by end-use

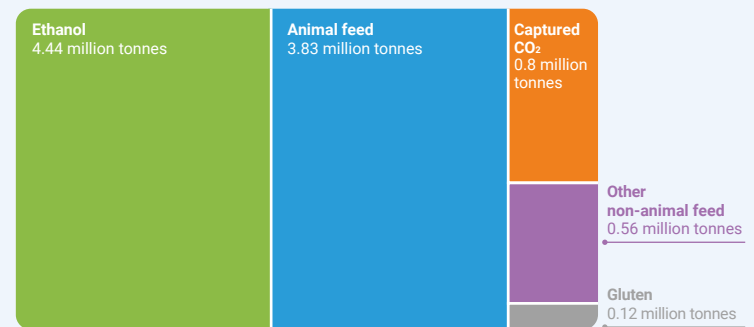
In 2019, ePURE members produced 5.6 billion litres of ethanol, operating at 87% of their 6.45 billion litres of installed capacity. Fuel accounted for over 82.3% of the use; other markets, such as beverages and industrial applications, represented 9.2% and 8.5% respectively.



Source: Aggregated and audited data of ePURE members (pure alcohol)

Main output of European renewable ethanol plants

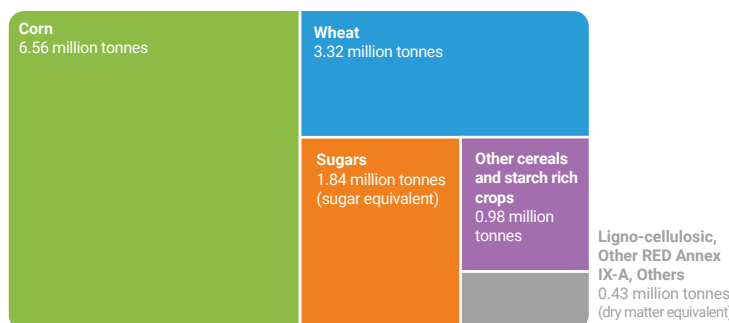
Animal feed makes up the largest share of renewable ethanol co-products produced by ePURE members. Of the 5.33 million tonnes of co-products produced in 2019, 3.83 million tonnes were animal feed.



Source: Aggregated and audited data of ePURE members (ethanol - pure alcohol; animal feed co-products - dry matter equivalent; other co-products - commercial equivalent)

Feedstock used to produce renewable ethanol

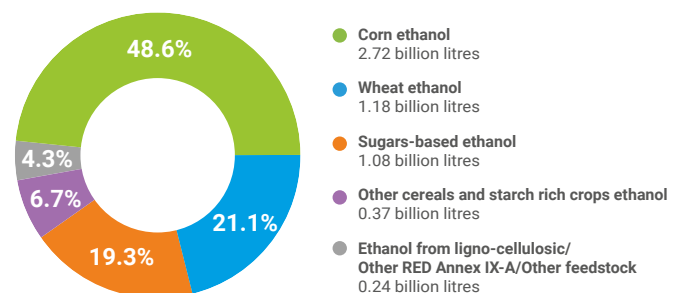
More than 99% of all feedstock used to produce renewable ethanol by ePURE members was grown in Europe.



Source: Aggregated and audited data of ePURE members

Share of European renewable ethanol produced from each feedstock type

In 2019, 48.6% of the ethanol produced was from corn, followed by wheat (21.1%) and sugar (19.3%).



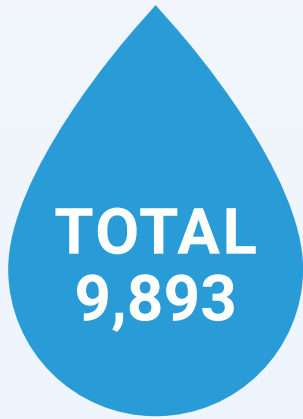
Source: Aggregated and audited data of ePURE members (pure alcohol)



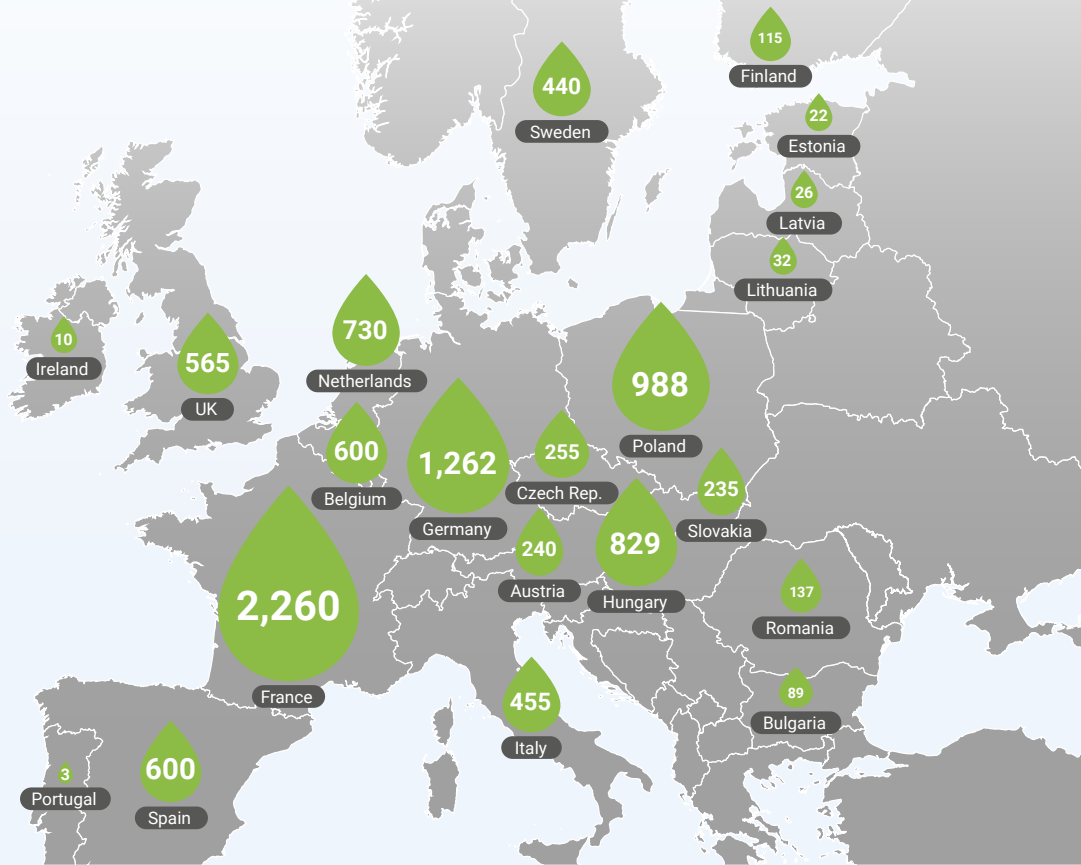
EU renewable ethanol market at a glance – 2019

European renewable ethanol installed production capacity (Million litres)

Includes non-ePURE members. ePURE members account for 6.45 billion litres of total European production capacity.

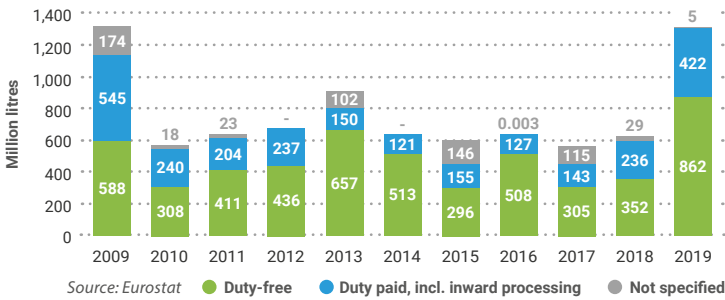


Source: ePURE estimates based on F.O. Licht

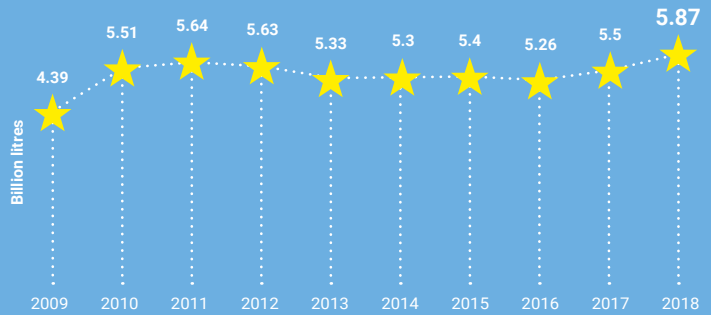


Imports of ethanol into the EU

EU ethanol imports doubled compared to 2018, reaching 1,289 million litres. Imports from countries enjoying duty-free access to the EU accounted for 67% of the imports, while imports from countries without preferential access accounted for 33%. These include imports from the US which increased by 233%.



EU biogasoline consumption



Source: Eurostat, Biogasoline: liquid biofuels suitable to be blended with or to replace motor gasoline from fossil origin e.g. ethanol, methanol and the share of ETBE and MTBE from biomass

Top 10 origins of EU ethanol imports

